



Wisma Tani, Putrajaya

(ARCHITECT'S STATEMENT)

► 4G1 is one of four sites making up the 4Gs, a grouping of four ministries flanking the Boulevard in Precinct 4, Putrajaya. This three-acre plot was designated to the Ministry of Agriculture, which opened up numerous avenues of expressions for the project.

As a part of four sites, the unifying element is the leaf shaped tower which is 18-storeys high. As the site was sloped along its length, the podium block ranged between five and six storeys high.

The concept for this development is two-pronged. One was to take the line of heritage and expand the planning of the Malacca courtyard house, the civilisation of Malacca being



melting pot of many cultures. The other was to express the concept of agriculture through its architecture and landscape.

The Malacca courtyard house has a series of courtyards separated by screens. The courtyards bring light and ventilation to a deep plan and are the focus of charm and activity. In this project, the architects created one semi-open courtyard and one enclosed courtyard.

The semi-open courtyard or *halaman* has a grid which follows the shape of the leaf-shaped tower. The grid represents plantations, which is the footprint to the commercialisation of agriculture. A palm tree surrounded by *serai wangi* or citronella will be the main plants in

this grid as palms are grown commercially in grids and *serai wangi* is planted for aromatherapy. The plant was chosen for its untidy, free form which is in contrast to the grid. Other plants used elsewhere for the landscape are *bunga kantan*, *kemuning* and *bunga cina*.

A fountain in this *halaman* flows along a stream under a bridge to a waterfall, which drops 6 metres into a 20-metre diameter koi pond, with the fish and water symbolising hydroculture.

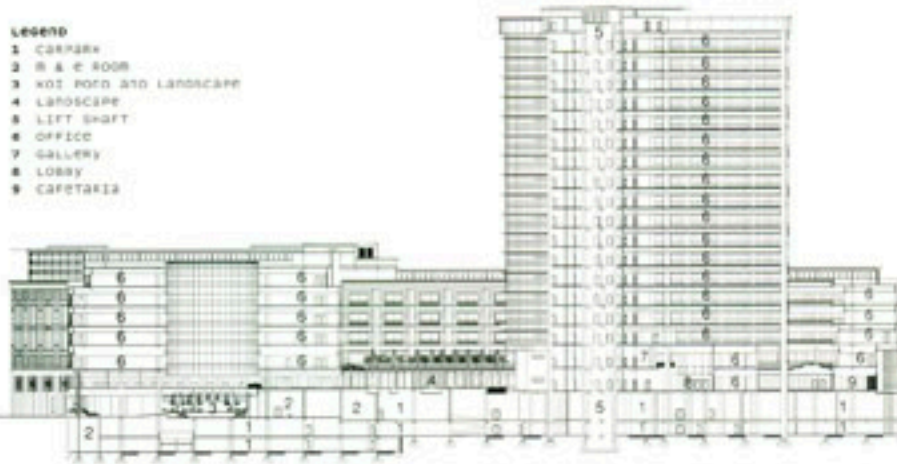
As one looks above the pond, one would notice that the office building has been opened up to create an opening to the sky. This is the second courtyard, introduced to bring in light to an otherwise deep and artificially lit

office space.

The tower has layers of louvres, similar to the shutters in Malacca houses. The podium façade is veiled by a screen of extruded aluminium in a design taken from one of the screens of a Malaccan filigree, but not unlike the *nyonya* embroidery which makes it look like lace. Malaccan steps were introduced to invite people to the common spaces of this building.

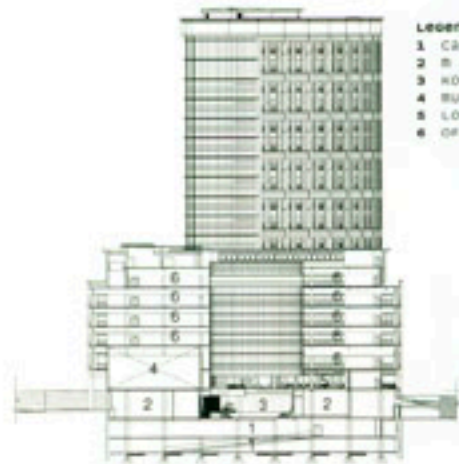
Another interesting feature of the tower is at the boulevard tip. One will notice that there is no column at the tip of the tower, unlike the other three towers. All of the 18 floors are being cantilevered by seven metres. This immediately opens up the entrance from the Boulevard as there is no ob-

- Legend**
- 1 CARPARK
 - 2 R & E ROOM
 - 3 KOI POND AND LANDSCAPE
 - 4 LANDSCAPE
 - 5 LIFT SHAFT
 - 6 OFFICE
 - 7 GALLERY
 - 8 LOBBY
 - 9 CAFETERIA



1 10 20m
SECTION A-A

- Legend**
- 1 CARPARK
 - 2 R & E ROOM
 - 3 KOI POND
 - 4 MULTI-PURPOSED
 - 5 LOBBY
 - 6 OFFICE



1 10 20m
SECTION B-B



- 1 The halaman with a fountain and stream
- 2 The waterfall and koi pond with atrium above next to Malacca steps at the west entrance
- 3 The multi-purpose hall
- 4 View of the driveway and the tempayan-shaped sculpture and the pergola walkway

CLIENT
Putraaja Holdings Sdn Bhd

ARCHITECT
Almaz Architect

TOWN PLANNER
Rekalancang Sdn Bhd

C&S ENGINEER
Syed Mansur & Associates
Sdn Bhd

M&E ENGINEER
W Consult Sdn Bhd

LANDSCAPE ARCHITECT
SOG Associates Sdn Bhd

QUANTITY SURVEYOR
Baharuddin, Ali & Low

INTERIOR DESIGNER
BT Design Group Sdn Bhd

MAIN CONTRACTOR
Putra Perdana Construction
Sdn Bhd





5 The koi pond and waterfall at the atrium



6 View of the curved walkway

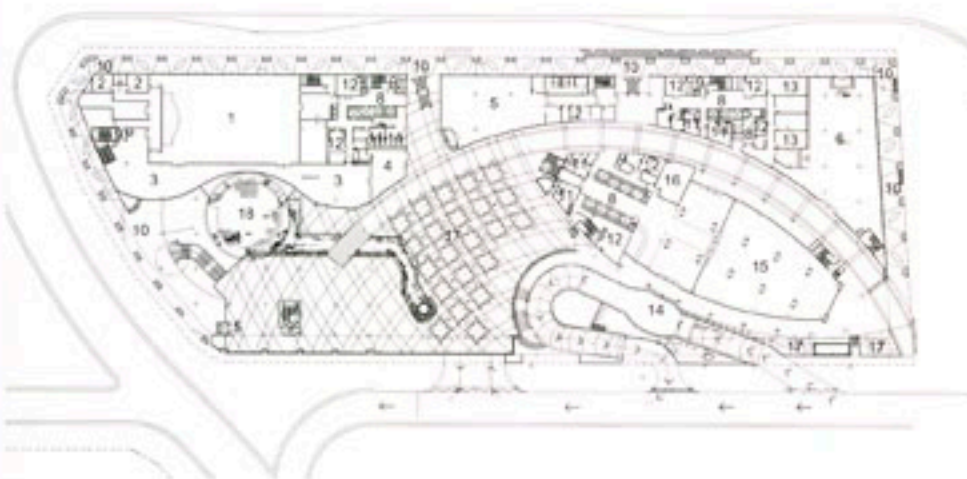


7 M.S. grill detail at pedestrian walkway



1 10 20m
2ND FLOOR PLAN

- LEGEND**
- 1 OFFICE
 - 2 FIRE STAIRCASE
 - 3 LEFT LOBBY
 - 4 R&B ROOM
 - 5 TOILET
 - 6 VOID



1 10 20m
GROUND FLOOR PLAN

- LEGEND**
- 1 MULTI-PURPOSE HALL
 - 2 CHANGING ROOM
 - 3 PRE-FUNCTION
 - 4 VIP WAITING ROOM
 - 5 TASKS
 - 6 CAFETERIA
 - 7 ENTRANCE LOBBY
 - 8 LEFT LOBBY
 - 9 FIRE STAIRCASE
 - 10 ARCADE
 - 11 TOILET
 - 12 R & B ROOM
 - 13 STALL
 - 14 ENTRANCE
 - 15 OFFICE
 - 16 BUILDING OPERATION ROOM
 - 17 LANDSCAPE
 - 18 VOID

struction at the tip. A double-volume entrance was made to further enhance its importance. At street level one can see the bronze aluminium strip ceilings as it opens up to the public.

On the typical floors, one can look out and have an uninterrupted view of the air-space over the street junction where the four towers meet. The experience is almost as if one was to stand at the mast of the Titanic. It was even more exhilarating during construction, before the curtain wall was installed.


Other special areas in the Ministry are the multipurpose hall, cafeteria, child care centre and the surau. The glazed pre-function area to the multipurpose hall has an amazing view of

the waterfall and koi pond.

Another interesting feature is the huge *tempayan*-like sculpture in the midst of the landscape area where the driveway curves. This is constructed in shaped aluminium fins with a layered top. It is in fact a cover for the gas area station, which had to be located in the middle of the site.

Uniquely, this building has no rear façade. All sides had to have a face and it had to be accessible from all sides, as one of the important features of the design is the accessibility from all sides of the building. This was one criteria set by Putrajaya Corporation in the planning of the layout to encourage the public to enter, walk through and enjoy the external

spaces of the building. This is apparent, as the waterfall is a popular spot for bridal photographs, while the koi pond area is also a popular spot for families during the weekends. The building is also a popular film location so much that a Bollywood movie has been shot here! The space near the bridge and stream is often used for Ministerial functions as it is breezy and has an amazing view of the Seri Saujana Bridge.

If people are able to enjoy the building and the public realm that it embodies, then it would be correct to say that as a public and ministerial building, it has been successful in breaking the barriers between officialdom and the man in the street. 



Street corner view of podium